

This document is supplemental to the quick start guide and software user manual software user manual shipped with your system. Both documents can be downloaded at <https://www.exacq.com/support/specsheets.html>

This document describes the camera configuration software provided by major IP camera manufacturers for use prior to configuring your exacqVision system. For additional information, please consult with the camera manufacturer's software instructions.

Most systems can be installed with the following steps:

1. Install the servers as shown in the exacqVision Quick Start Guides.
2. Confirm the camera has the correct firmware version at: <http://www.exacq.com/support/ipcameras.html>.
3. Configure the cameras with a **fixed IP address** as shown in this document.
4. Test camera-to-server communications by browsing to the camera from the server.
5. Configure your exacqVision server as shown in the user manual.
6. Consult the Exacq Knowledge Base at <https://www.exacq.com/kb/> for additional information.

Each IP camera manufacturer provides a utility to find cameras on the local network and set their IP addresses. This utility is typically available on the software CD shipped with your camera, or from the camera manufacturer's web site. Please refer to the documentation provided by your camera's manufacturer if you have questions after reading this guide.

**Supported Manufacturers:**

1. AXIS
2. IQinVision
3. Sony
4. Panasonic
5. ACTi
6. Vivotek
7. Arecont
8. ioimage
9. StarDot
10. Ganz
11. Basler
12. IPX
13. Sanyo
14. Pelco
15. Samsung

**NOTE:** This manual does not discuss cameras interfacing with ONVIF or RTSP protocols. See Chapter 4 of the user manual and the Exacq Knowledge Base for additional information on configuration of these cameras.

## Windows Firewall

If you have Windows Firewall enabled on your computer, you will see the following dialog box when you run any of the camera manufacturer's utilities. Click Unblock to allow the utility to work properly.



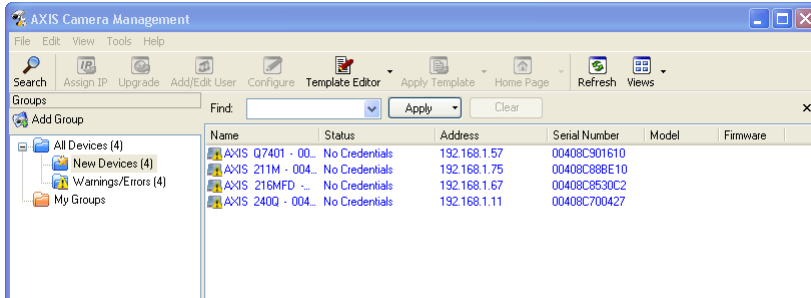
## DHCP

Although some IP camera manufacturers support DHCP addressing, Exacq **highly recommends** assigning a static IP address to your IP cameras to keep unexpected network events from changing the IP address of the camera. If the camera's IP address changes, the exacqVision Server cannot receive or record video from that camera until a user manually reassigns the camera's IP address or changes the address setting on the exacqVision server to match the camera's new address.

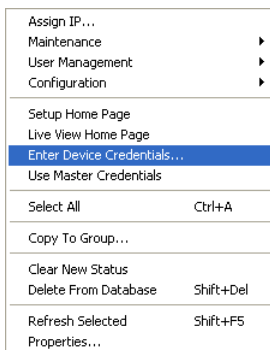
If your camera ships by default with DHCP addressing, you must have a DHCP server on the camera subnet to provide an initial address to the camera. Go to the DHCP server or camera manufacturer's software to determine the address assigned to the camera, and then assign the camera a fixed IP address. Alternatively, Chapter 4 of the software user manual explains how the exacqVision server can discover cameras on the server's subnet (excluding some ONVIF and all RTSP cameras).

# 1 AXIS

AXIS provides the *AXIS Camera Management Utility* to find IP cameras. Run the utility to display the following window:



AXIS cameras on the network are listed. Right-click a camera and select **Enter Device Credentials...**



Enter the username and password for the device. Right-click the camera again and select **Assign IP...**



Enter the IP address, subnet mask, and default router. Click OK to apply the IP address.

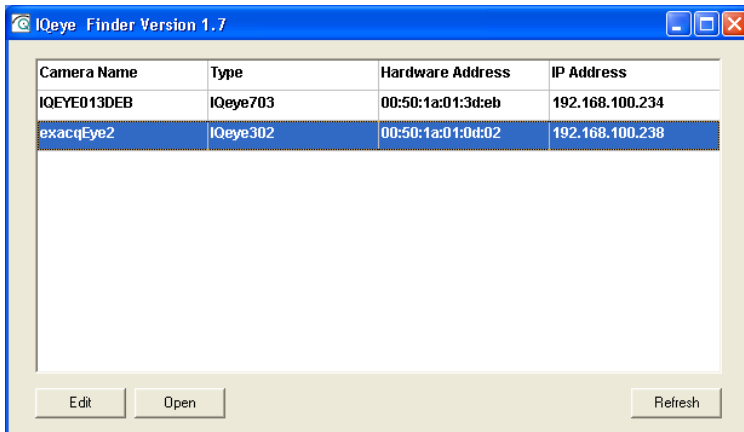
**NOTE:** The factory default login for Axis IP cameras is:

- username: **root**
- password: **pass**

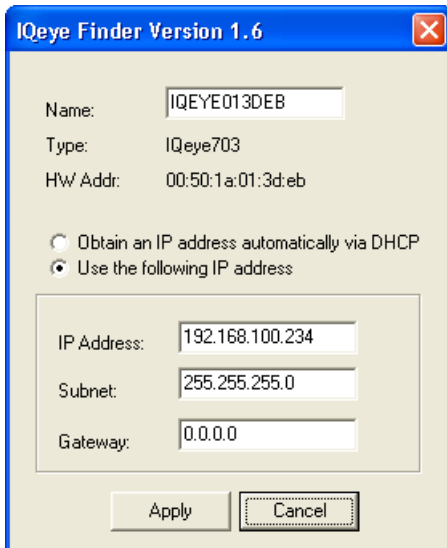
You will need the username and password when you add this camera to your exacqVision system.

## 2 IQinVision

IQinVision provides the *iqfinder* utility to find IP cameras. Run the utility to display the following window:



Select the camera and click Edit to change the camera's IP properties.



IQinVision cameras typically do not use DHCP by factory default, you must manually assign the camera an IP address. Enter an IP address that is not used by any other device on your local network, ensuring that the first three numbers match the first three numbers of your exacqVision Server's IP address. Set the subnet to 255.255.255.0 and click Apply.

**NOTE:** The factory default login for IQinVision IP cameras is:

- username: **root**
- password: **system**

You will need the username and password when you add this camera to your exacqVision system. To get the IQinVision camera to factory defaults, hold the reset button in while powering on the camera.

Sony provides the *IP Setup* utility to find IP cameras. Run the utility to display the following window:

Device name	MAC address	Device address(IPv4)	DHCP/Fixed IP(IPv4)	HTTP Port No.	Model	Serial No.	Version No.	Admin name
Device0001	00-1d-ba-0f-93-cf	192.168.102.166	Fixed IP	80	SNC-RX570N	101203	3.14	
Device0002	00-01-4a-ed-6f-60	192.168.102.171	Fixed IP	80	SNC-CS50N	103141	2.32	
Device0003	00-1d-ba-31-5b-c6	192.168.102.165	Fixed IP	80	SNC-DS60	100024	1.10	
Device0004	00-1d-ba-31-5c-19	192.168.102.172	Fixed IP	80	SNC-DM160	100007	1.11	
Device0005	00-1d-ba-31-5a-e4	192.168.102.184	Fixed IP	80	SNC-CS20	100098	1.10	
Device0006	00-1d-ba-31-5b-75	192.168.102.182	Fixed IP	80	SNC-CM120	100093	1.10	
Device0007	00-1d-ba-0f-62-3a	192.168.102.179	Fixed IP	80	SNC-DS10	100073	1.10	
Device0008	00-24-be-56-af-91	192.168.102.183	Fixed IP	80	SNC-RS44N	100017	1.34.00	
Device0009	00-24-be-2fab-1a	192.168.102.167	Fixed IP	80	SNT-EX104	100014	1.31.00	
Device0010	78-84-3c-55-e8-3e	192.168.102.186	Fixed IP	80	SNC-DH210T	2000151	1.27.02	
Device0011	00-01-4a-2f-9f-9b	192.168.102.178	Fixed IP	80	SNC-RZ25N	123340	1.30	
Device0012	00-24-be-d2-28-d8	192.168.102.188	Fixed IP	80	SNC-DH140	100158	1.31.00	
Device0013	54-42-49-19-cb-df	192.168.102.180	Fixed IP	80	SNC-DH180	100243	1.31.00	
Device0014	54-42-49-d5-ea-24	192.168.102.177	Fixed IP	80	SNC-CH220	1000007	1.31.00	
Device0015	54-42-49-ba-b6-20	192.168.102.181	Fixed IP	80	SNC-CH160	1000044	1.31.00	
Device0016	78-84-3c-c8-4d-7b	192.168.102.190	Fixed IP	80	SNC-DH110T	1000584	1.27.02	
Device0017	54-42-49-3d-64-3e	192.168.102.189	Fixed IP	80	SNC-DH240	100056	1.31.00	
Device0018	54-42-49-3d-63-7e	192.168.102.176	Fixed IP	80	SNC-CH240	100064	1.31.00	
Device0019	00-24-be-2fab-18	192.168.102.169	Fixed IP	80	SNT-EX104	100014	1.31.00	
Device0020	00-24-be-2fab-19	192.168.102.170	Fixed IP	80	SNT-EX104	100014	1.31.00	
Device0021	78-84-3c-55-df-65	192.168.102.187	Fixed IP	80	SNC-CH110	2000388	1.27.02	
Device0022	54-42-49-d5-ec-1f	192.168.102.174	Fixed IP	80	SNC-DH220	1000014	1.31.00	
Device0023	00-24-be-2fab-1b	192.168.102.168	Fixed IP	80	SNT-EX104	100014	1.31.00	
Device0024	54-42-49-ba-b0-22	192.168.102.175	Fixed IP	80	SNC-DH160	1000510	1.31.00	

Select the camera to edit the camera IP properties. Sony cameras typically do not use DHCP by factory default, you must manually assign the camera an IP address. Enter an IP address that is not used by any other device on your local network, ensuring that the first three numbers match the first three numbers of your exacqVision Server's IP address. Set the subnet to 255.255.255.0, leave the HTTP port at 80, enter the camera's Administrator name and password, and click Apply.

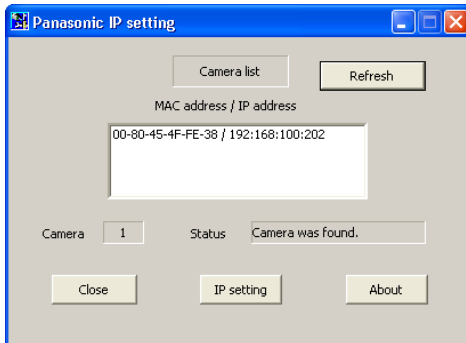
**NOTE:** The factory default login for Sony IP cameras is:

- username: **admin**
- password: **admin**

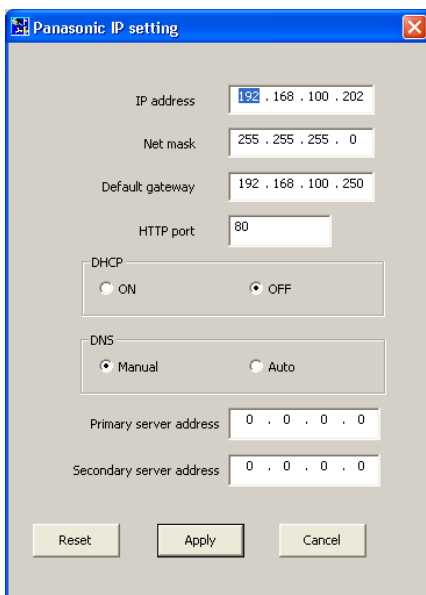
You will need the username and password when you add this camera to your exacqVision system.

## 4 Panasonic

Panasonic provides the *EasyIPSetup\_Ipro* utility to find IP cameras. Run the utility to display the following window:



Select a camera and click the IP Setting button to view and edit the camera's IP properties.



Panasonic cameras typically do not use DHCP by factory default, you must manually assign the camera an IP address. Enter an IP address that is not used by any other device on your local network, ensuring that the first three numbers match the first three numbers of your exacqVision Server's IP address. Set the net mask to 255.255.255.0, leave the HTTP port at 80, enter the camera's Administrator name and password, and click Apply.

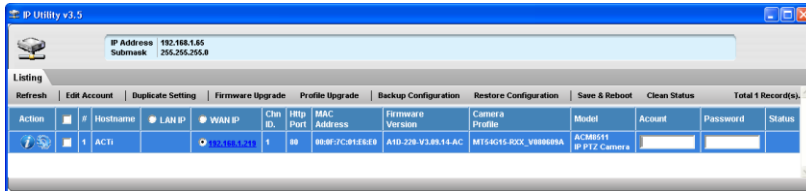
**NOTE:** Panasonic cameras automatically disable their response to configuration queries 20 minutes after being reset. If your camera has been running for more than 20 minutes, reset or power cycle it before querying or configuring its IP address through either exacqVision's IP camera finder or Panasonic's *EasyIPSetup* utility.

**NOTE:** The factory default login for Panasonic IP cameras is:

- username: **admin**
- password: **12345**

You will need the username and password when you add this camera to your exacqVision system.

ACTi provides the ACTi *IP Utility* to find IP cameras. This is located on the installation CD in the \Professional\Utility\IP Utility.exe directory. You might need to install the ACTi Streaming Activator Software from the CD to find the ACTi IP utility. Run the utility to display the following window:



Enter the Account name and Password in the appropriate fields, and then click Configure Camera Settings (the wheel button at the far left side of the row).



Change the WAN IP address to an IP address that is not used on your network. You cannot turn on DHCP here; that can be done only on the camera webpage. After you enter the IP address and subnet mask entered, click Apply and Save & Reboot.

**NOTE:** The factory default login for ACTi IP cameras is:

- username: **Admin**
- password: **123456**

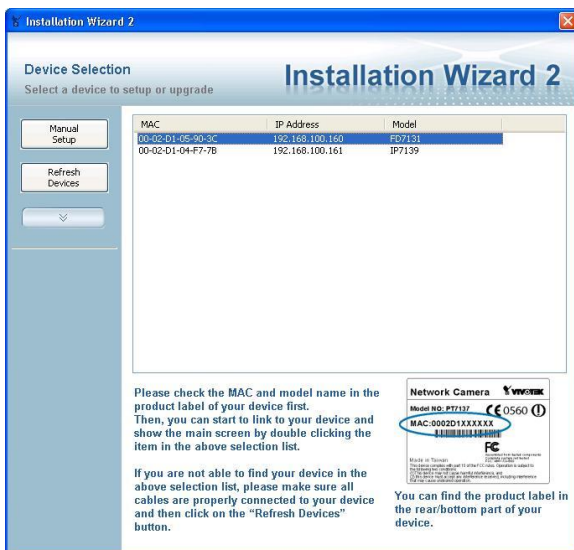
You will need the username and password when you add this camera to your exacqVision system.

## 6 Vivotek

Vivotek provides an *Installation Wizard* utility to find IP cameras. This is provided on the CD included in the box with the camera. Run the utility to display the following window:

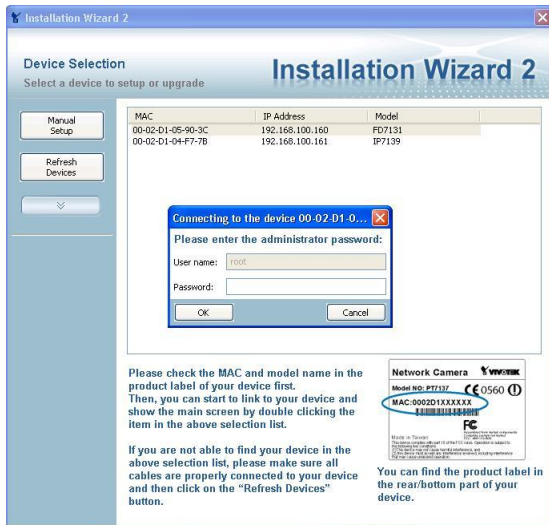


This detects and displays your type of network. Click Next to continue.

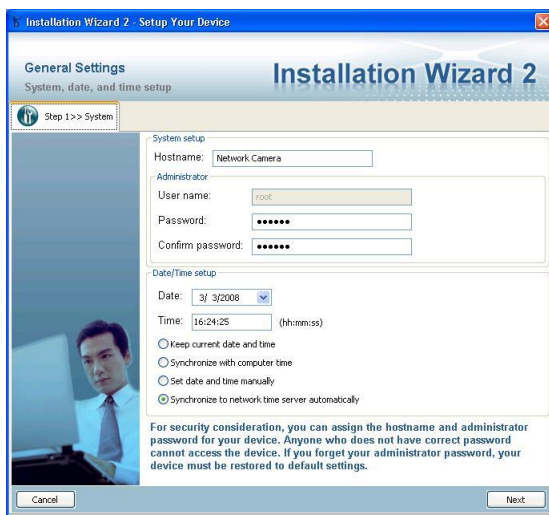




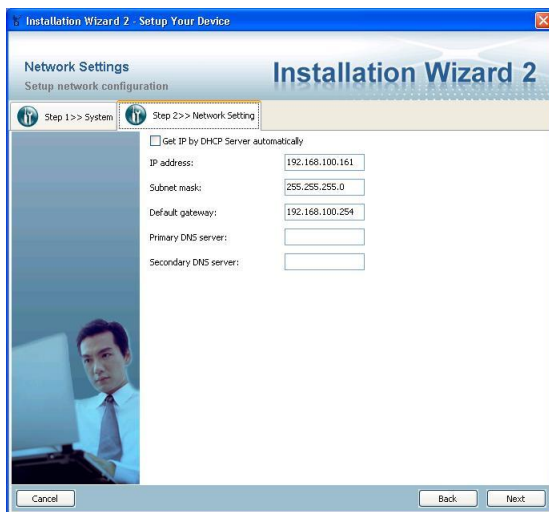
All Vivotek network cameras in your subnet are displayed. If the program does not detect the camera, verify that the cameras are actually in your local subnet. Double-click the camera that you want to configure.



Enter the root password for the Vivotek camera. If you have not set up the camera previously, the default password is blank.



Enter in the new root password and keep the default Date/Time settings. Click Next.



Enter the IP address, subnet mask, default gateway, primary DNS (optional), and secondary DNS server (optional). Select Get IP by DHCP Server Automatically if necessary. Click Next to continue.

Installation Wizard 2 - Setup Your Device

### Port Forwarding

Setup port forwarding

Step 1 >> System Step 2 >> Network Setting Step 3 >> Ports

If your device is located behind the router and you want to access it on Internet, your router must be configured. UPnP (Universal Plug and Play) technology will configure your router automatically if your router supports it. If your router does not support UPnP port forwarding, you need to configure the port numbers manually.

The wizard has detected that your router does not support UPnP port forwarding. Choosing the "Manual (Advanced)" radio button is recommended, and please also remembering to configure the port numbers in your router if you want to access the device on Internet.

☐ UPnP port forwarding  
☒ Manual (Advanced)

Manual port mapping

HTTP port: 8080  
RTSP port: 554  
RTP video port: 5556  
RTCP video port: 5557  
RTP audio port: 5558  
RTCP audio port: 5559

Cancel Back Next

Use the default ports.

Installation Wizard 2 - Setup Your Device

### DDNS Settings

Setup a domain name for device to be accessed on the Internet

Step 1 >> System Step 2 >> Network Setting Step 3 >> Ports Step 4 >> DDNS

☐ Enable DDNS

Registration Information

Host name:   
E-mail address:   
Key:  Forget Key  
Confirm key:  Register DDNS

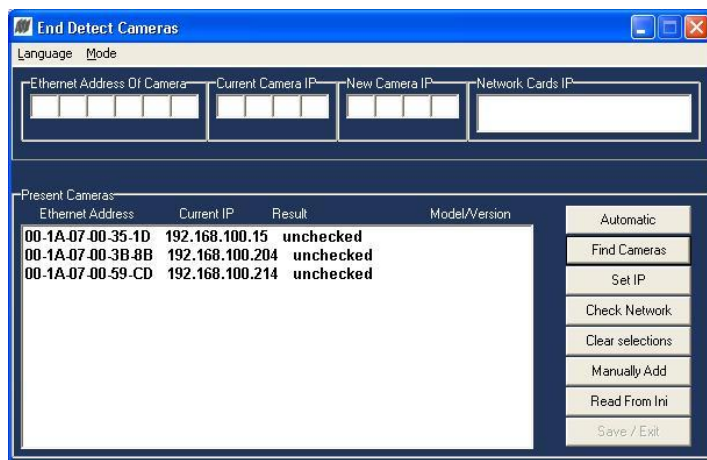
DDNS (Dynamic Domain Name Service) is a method of keeping a domain name linked to a dynamic public IP address. In many cable/DSL connections, a dynamic public IP address is assigned for every connecting request. You can setup your DDNS service here and the device will automatically update your DDNS host name if the public IP address is changed.

Advanced Information

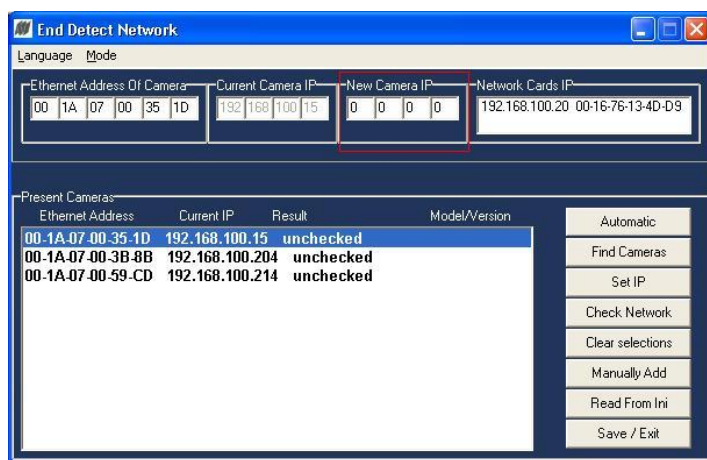
Cancel Back Next

Do not select Enable DDNS unless you are planning to put this camera on the Internet. This is not recommended. Click Next to complete the configuration.

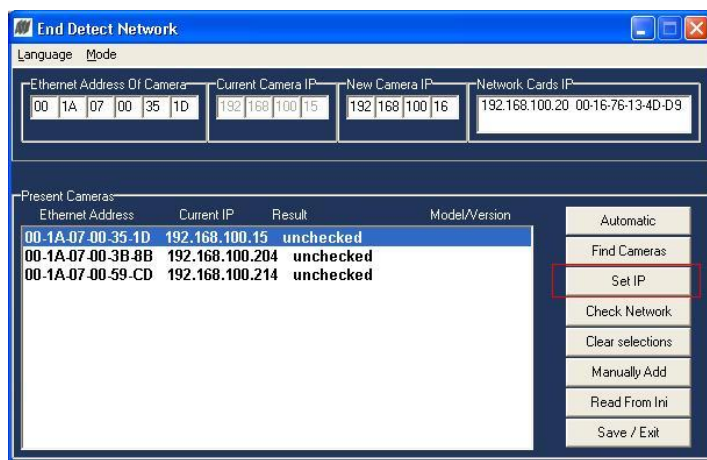
Arecont includes a utility to find IP cameras on the CD sent with the camera. Run the utility to show the following window:



Click Find Cameras to search for Arecont IP cameras on the local subnet. If the program does not detect the camera, verify that the cameras are actually in your local subnet.

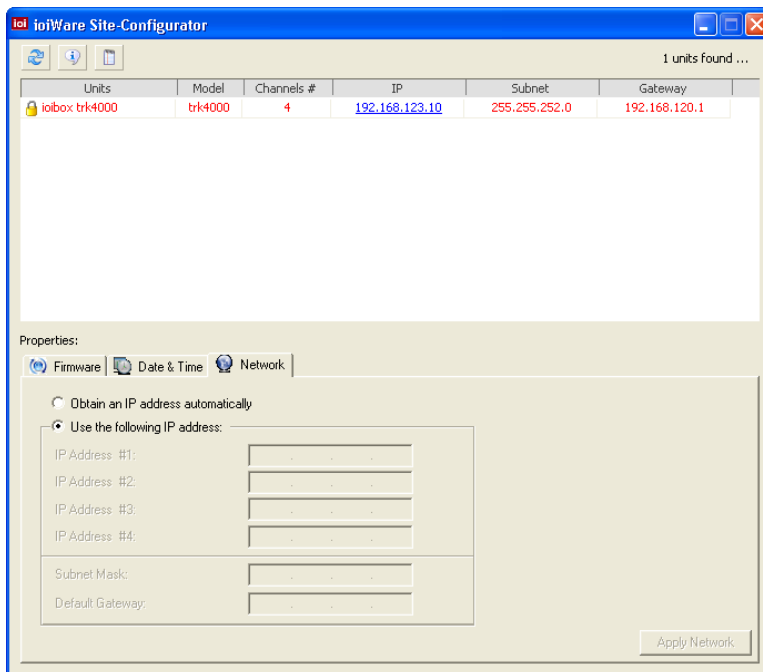


Enter the IP Address in the New Camera IP field.

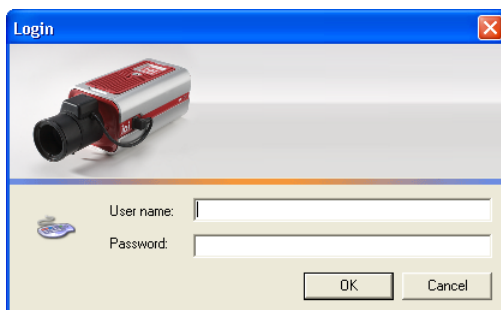


Click Set IP to set the IP address. To configure additional information for the camera, go to the camera's web page.

ioimage provides a utility to find IP cameras called the *ioiWare Site-Configurator*. This utility is provided on the CD included in with the camera. Run the utility to display the following window:



You must change your own IP address so that you can reach the IP address 192.168.123.10. When you run the ioiWare Site-Configurator, it detects the device. Select the device and then the Network tab. You can configure the device's IP address to be static or obtain an IP address automatically. When finished, click Apply Network.



Enter the username and password for the device. Click OK to set the IP address and reboot the device.

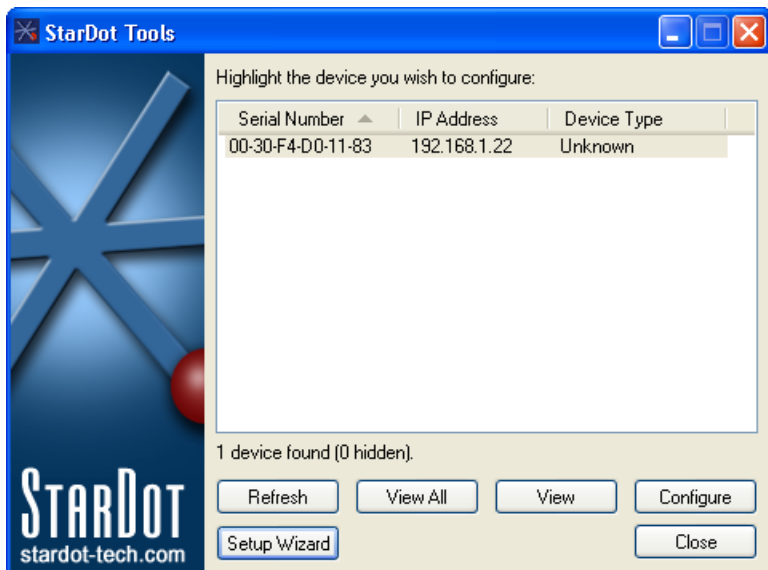
**NOTE:** The factory default login for ioimage devices is:

- username: **admin**
- password: **admin**

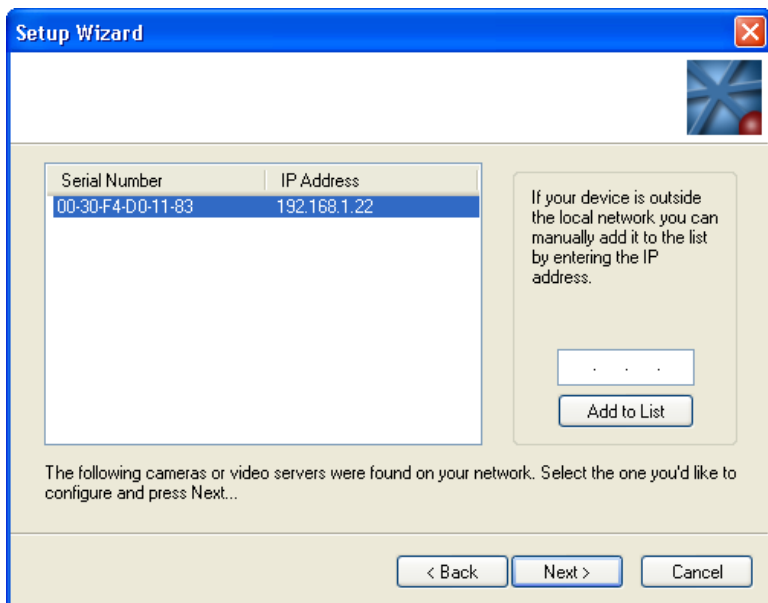
You will need the username and password when you add this camera to your exacqVision system.

## 9 StarDot

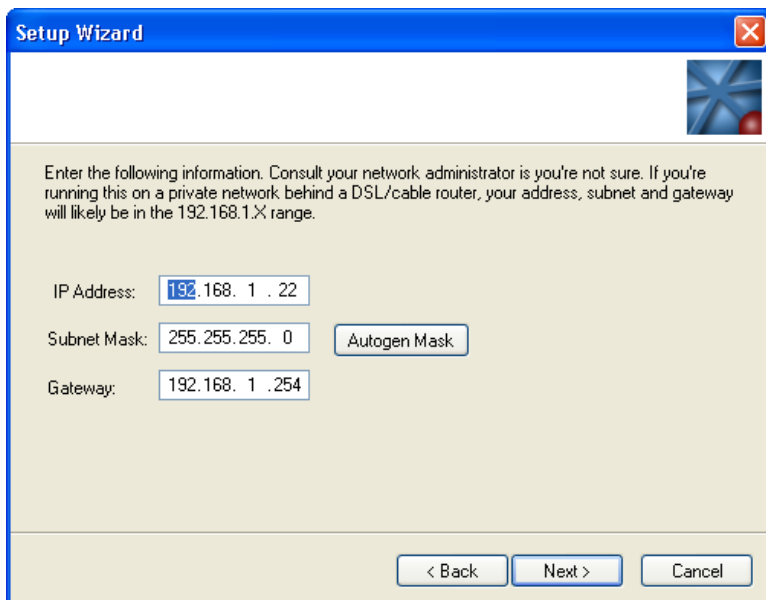
StarDot provides a utility to find IP cameras called *StarDot Tools*. This utility is provided on the CD included with the camera. Run the utility to display the following window:



The StarDot Tools utility detects cameras that are on your network. To configure the IP address, select the Camera and then click Setup Wizard.



Select the method used to connect to the camera and then click Next. Select the IP camera from the list and click Next. The configuration of the camera is then displayed. Select the primary method of communication, which is usually Network.



**Setup Wizard**

Enter the following information. Consult your network administrator if you're not sure. If you're running this on a private network behind a DSL/cable router, your address, subnet and gateway will likely be in the 192.168.1.X range.

IP Address:

Subnet Mask:

Gateway:

< Back   Next >   Cancel

Select either Static IP Address, or Server-Assigned IP Address (DHCP). If you select Static IP Address, enter the IP address, subnet mask, and gateway. Select Only Serve Images on Request, No Upload, Then click Next, and then click Next again to reboot the camera to the new IP address.

Ganz provides the Ganz Installation Tool to find IP cameras. This utility is provided on the CD included with the camera. Run the utility to display the following window:

The screenshot shows the 'GANZ Installation Tool' window. It has a menu bar with 'File' and 'About'. The main area is divided into three sections: 'Auth' with 'Admin ID' and 'Admin Password' fields; 'Network' with radio buttons for 'Static' and 'DHCP', and input fields for 'IP Address', 'Subnet Mask', and 'Default Gateway'; and 'Camera Info' with fields for 'CameraName', 'Model Name', 'Serial No', 'F/W Ver', 'Net Mode', 'IP Address', 'Http Port', 'Subnet Mask', and 'Mac Address'. There are buttons for 'Set IP Address', 'Reboot', and 'Program Update'. An 'IP Camera Search' button is located below the 'Auth' section. At the bottom, there is a 'Camera List' section with an empty list box.

Click IP Camera Search to search for Ganz IP cameras on the local subnet. If the program does not detect the camera, please verify that the cameras are in your local subnet.

The screenshot shows the 'GANZ Installation Tool' window after a search. The 'Camera List' section now contains a table with the following data:

IP Address	Model Name	Serial No	Mac Address
192.168.100.63	ZN-D9312NHA	RIA00010	00:1c:b8:00:00:66
192.168.100.68	TPDM001N2M	TP0000000001	00:1c:b8:00:00:c5

The 'Camera Info' section on the right now displays the details for the first camera found:

- CameraName: camera01
- Model Name: ZN-D9312NHA
- Serial No: RIA00010
- F/W Ver: 1.10.07.0113
- Net Mode: dhcp
- IP Address: 192.168.100.63
- Http Port: 80
- Subnet Mask: 255.255.255.0
- Mac Address: 00:1c:b8:00:00:66

All Ganz IP cameras on the local subnet are listed in the Camera List section. Select a camera to display information in the Camera Info area.

**GANZ Installation Tool**

File About

**Auth**  
 Admin ID: admin  
 Admin Password: .....

**Network**  
☒ Static ☐ DHCP  
 IP Address: 192.168.100.64  
 Subnet Mask: 255.255.255.0  
 Default Gateway: 192.168.100.1  
 Set IP Address  
 Reboot

**Camera Info**  
 CameraName: camera01  
 Model Name: ZN-D9312NHA  
 Serial No: RIA00010  
 F/W Ver: 1.10.07.0113  
 Net Mode: dhcp  
 IP Address: 192.168.100.63  
 Http Port: 80  
 Subnet Mask: 255.255.255.0  
 Mac Address: 00:1c:b8:00:00:66

IP Camera Search Program Update

**Camera List**

192.168.100.63	ZN-D9312NHA	RIA00010	00:1c:b8:00:00:66
192.168.100.68	TPDM001N2M	TP0000000001	00:1c:b8:00:00:c5

To change the IP address of the selected camera, select Static in the Network area. Enter the IP address and default gateway, and then click Set IP Address.

**NOTE:** The factory default login for Ganz devices is:

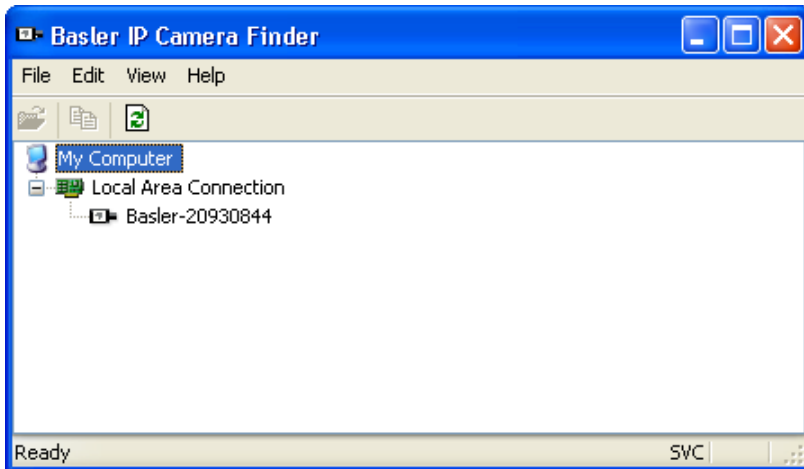
- username: **admin**
- password: **admin**

You will need the username and password when you add this camera to your exacqVision system.

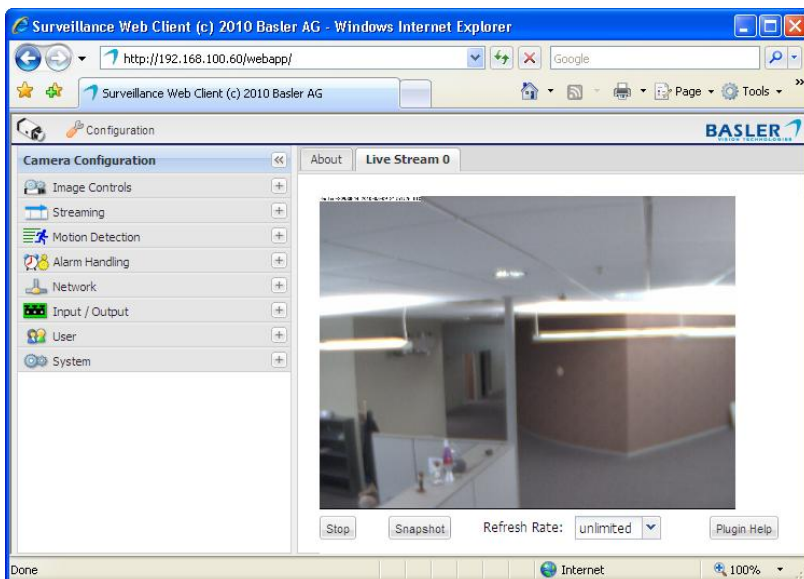


## 11 Basler

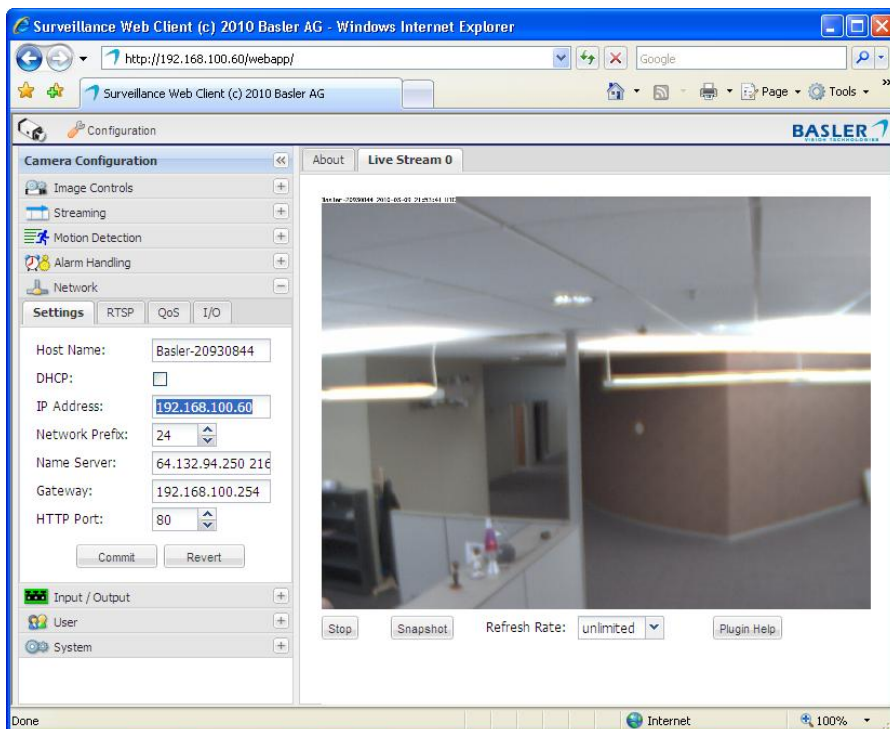
Basler provides the IP Camera Finder to find Basler IP cameras. This utility is provided on the CD included with the camera. Run the utility to display the following window:



All the Basler IP cameras on the local subnet are displayed under Local Area Connection. To configure a camera, right click and select Open In Browser.



Click Configuration to display the Camera Configuration panel.



Expand the Network panel to display the camera's Settings tab. Deselect DHCP and then change the IP address and other information as appropriate. Click Commit when finished.

**NOTE:** The factory default login for Basler cameras is:

- username: **admin**
- password: **admin**

You will need the username and password when you add this camera to your exacqVision system.

## 12 IPX

To change the camera's IP address, make sure the DIP switch on the camera's left flank panel is set to 4 (STATIC IP). To run the utility, connect the camera to a computer using a USB cable. The following window is displayed:

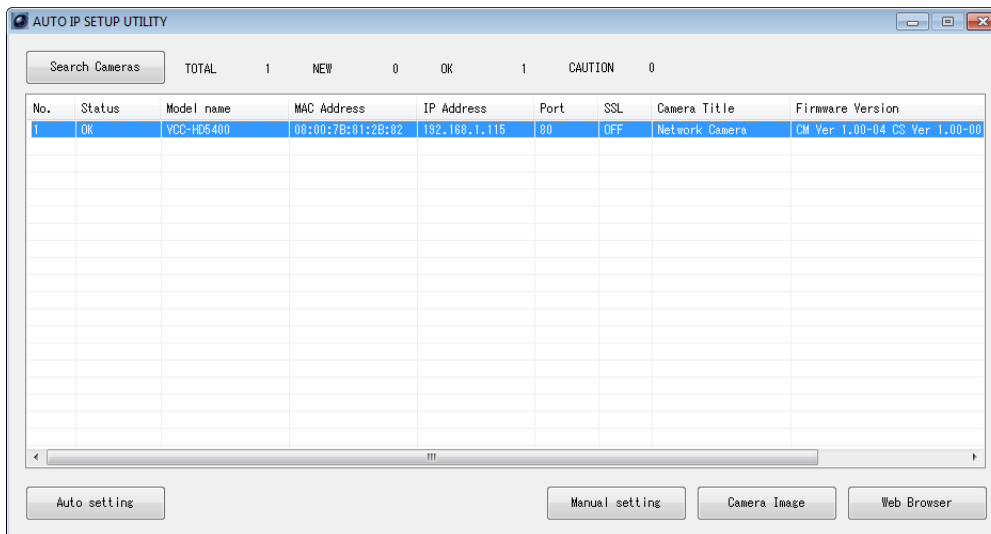
USB Configuration v1.03

Title	ipxcam(00:0C:0C:01:73:CF)			DHCP	OFF				
IP Address	192	168	1	61	Netmask	255	255	255	0
Gateway	192	168	1	254	DNS Server	64	132	94	250
HTTP Port	80								
PPPoE Enable	OFF								
Account					Password				
Mode Setting	<input type="radio"/> Infra-structure <input type="radio"/> Ad-Hoc				ESSID				
Channel					WEP Key				
Default Key	<input type="radio"/> 1 <input type="radio"/> 2 <input type="radio"/> 3 <input type="radio"/> 4				<input type="radio"/> Disable <input type="radio"/> 64 bit <input type="radio"/> 128 bit				
Key1					Key2				
Key3					Key4				
					Launch(L)    Apply(A)    Exit(E)				

Select OFF from the DHCP drop-down list in the utility. Enter the IP address, netmask, gateway, DNS server, and HTTP port information. Click Apply and then Exit when finished.

## 13 Sanyo

Sanyo provides the Auto IP Setup utility to find and configure IP settings on Sanyo cameras. Run the utility (you must be logged in as an Administrator in Windows 7) to display the AUTO IP SETUP UTILITY window. Click Search Cameras to locate Sanyo cameras on your network. This process can take several minutes to complete.



When the camera appears in the Search results list, select the camera and click Auto Setting; this automatically assigns an IP address and other network information to your camera.

Or, to assign a specific IP address to the camera, click Manual Setting. This opens the following window:

LOGIN

Please input User name and Password of the camera.

User name:

Password:

Set below as well when using SSL or changed port number.

Port:

SSL: ☐ ON ☒ OFF

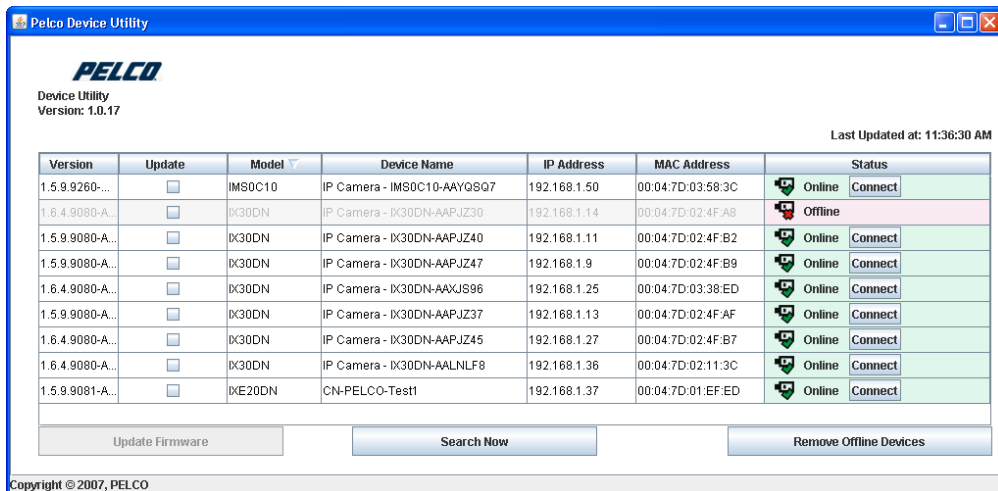
Enter the default credentials and click Execute. When you are logged in, you can assign IP information to the camera. When finished, click Execute. After the camera completes the update, the newly assigned camera information is displayed in the Search results list. **NOTE:** The factory default login for Sanyo cameras is:

- username: **admin**
- password: **admin**

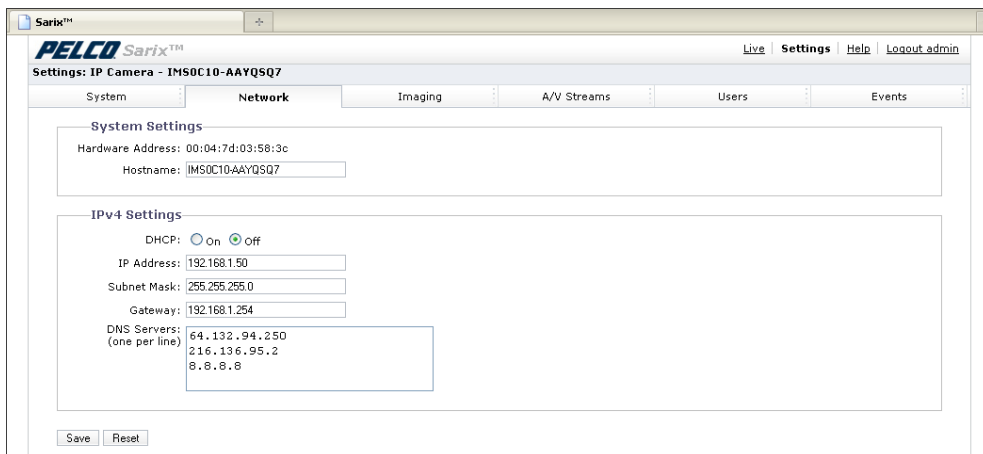
You will need the username and password when you add this camera to your exacqVision system.

Pelco provides the Pelco Device Utility to find and configure IP settings on Pelco cameras. Run the utility to display the following window.

**NOTE:** To run the Pelco Device Utility, Java must be installed on the computer. For complete information about the Pelco Device Utility, see the manufacturer's documentation.



All Pelco cameras on your network are listed in the utility. Click Search Now to update the list. To change the network settings for a camera, select Connect in the appropriate row in the Status column. This opens the camera's web page in the default browser.



To change the IP address, select Off next to DHCP and type the address. Click Save when finished.

**NOTE:** The factory default login for Pelco cameras is:

- username: **admin**
- password: **admin**

You will need the username and password when you add this camera to your exacqVision system.

Samsung provides the *Samsung IPInstaller Utility* to find IP cameras. Run the utility to display the following window:

No	Device Name	Alias	Mode	MAC Address	IP Address	Protocol	URL
1	SNZ-5200	N/A	Static	00:09:18:71:21:7D	192.168.102.114	IPv4	http://192.168.102.114/index.htm
2	SNV-3080	N/A	Dynamic	00:16:8C:47:5E:88	192.168.100.86	IPv4	http://m475a60.websamsung.net:8...
3	SNV-5080	N/A	Static	00:09:18:70:A0:92	192.168.102.111	IPv4	http://192.168.102.111/index.htm
4	SNB-5000	N/A	Static	00:09:18:70:B4:05	192.168.102.66	IPv4	http://192.168.102.66/index.htm
5	SNB-1000	N/A	Static	00:00:F1:30:24:E0	192.168.102.70	IPv4	http://192.168.102.70/index.htm
6	SNB-3080	N/A	Static	00:16:8C:47:5A:6F	192.168.102.110	IPv4	http://m475a6f.websamsung.net:8...
7	SNB-2000	N/A	Static	00:16:8C:47:5E:7F	192.168.102.72	IPv4	http://m475e7f.websamsung.net:8...

Samsung cameras on the network are listed. Click Search to update the list. To change the network settings for a camera, highlight a camera and select **Manual Set**. This opens the following window:

Manual Setting

Address ☐ DHCP

MAC Address: 00:09:18:70:B4:05

IP Address: 192 . 168 . 102 . 66

Subnet Mask: 255 . 255 . 252 . 0

Gateway: 192 . 168 . 100 . 254

Password:

Port: HTTP Port: 80, VNP Port: 4520

OK Cancel

Enter the IP address, subnet mask, and default gateway. HTTP Port is used to access the camera in a web browser (the default is 80). VNP Port is used to control the video signal transfer (the default is 4520). Leave the Password box blank to keep the default password. Click OK to apply the new settings.

**NOTE:** The factory default login for Samsung IP cameras is:

- username: **admin**
- password: **4321**

You will need the username and password when you add this camera to your exacqVision system.