

exacqVision EL-S

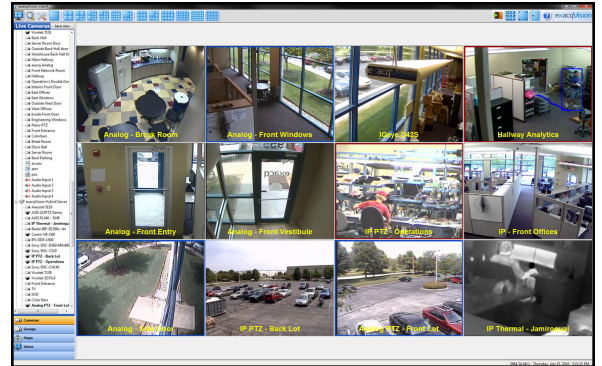
Compact, Reliable, Energy-Efficient Hybrid NVR Appliance



exacqVision EL-S is a low cost, highly energy efficient, hybrid network video surveillance appliance that provides a new level of reliability, performance and energy efficiency. High reliability is achieved through the use of Linux OS on a solid-state drive, ensuring the unit is always accessible. Full D1 30fps on 8 analog cameras. Extremely low power consumption for energy efficiency and cool operation.

Cross Platform IP Video Surveillance Software and Systems Hybrid NVR Servers - exacqVision EL-S

8 or 16 Analog Inputs and up to 24 IP Inputs
240 ips at D1 Resolution
Up to 2TB storage



Features exacqVision EL-S Rackmount Hybrid NVR Servers & exacqVision VMS Software



- **High Reliability** – Fully functional Linux OS operating on a flash drive ensures unit keeps functioning and alerts you of hard drive failures.
- **High Frame Rate** – 240 ips at D1 resolution
- **Efficient File Size** – Uses leading-edge H.264 video compression on all analog channels.
- **True Hybrid** – Any combination of analog and IP cameras from all of the leading camera vendors. Standard resolution or megapixel, even the latest H.264 compression IP cameras. Use existing analog cameras today, add up to 24 IP cameras.
- **Compact Chassis** – 1.5U Rackmount professional chassis can be used in tight spaces, under the counter, equipment cabinets, or in professional IT racks. Stack units for high-density camera counts.
- **Built-in DVD/CD-RW drive** – easily export video clips using the built-in CD/DVD-RW drive, or to USB flash drives.
- **High Energy Efficiency** – Reduced energy footprint and lower lifetime operating cost through energy efficient, cool operation design. Thermally-optimized chassis ensures cool operation and high reliability.
- **Low Cost** – One of the least expensive, true hybrid systems to purchase and operate on the market today.
- **High Performance** – Optimized application for the latest Intel® Atom™ microprocessor, providing high performance with very low power consumption and heat generation.
- **Intuitive exacqVision Software** - all of the features of exacqVision are available on this unit. Use as an inexpensive stand-alone system, or as part of a large enterprise system.
- **Cross-Platform Client** – View, search and administer with the exacqVision client software on Windows, Linux and Macintosh computers.
- **Powerful Remote Access** – Access video with web browsers and mobile devices with internet access; Apple® iPhone® & iPad™ app available; Android app available Summer 2010.



IP Camera Integration



Access Control Integration



The latest Network Camera Integration Partner list with model numbers is available at www.exacq.com/ipcameras.html

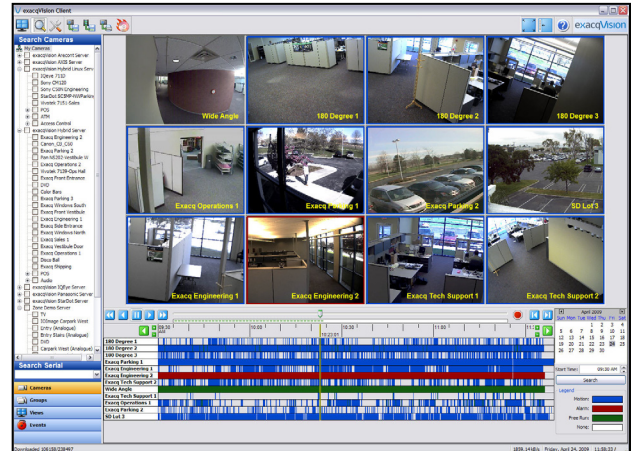
Technical Specifications - exacqVision EL-S Hybrid NVR Appliance

exacqVision EL-S SERVER APPLIANCE SPECIFICATIONS

RECORDING RESOLUTION - ANALOG	CIF: 352x240 NTSC / 352x288 PAL 2CIF: 720x240 NTSC / 720x288 PAL 4CIF (D1): 720x480 NTSC / 720x576 PAL
RECORDING RESOLUTION - IP:	Up to 10 Megapixel; IP camera dependent
FRAME RATE - ANALOG	NTSC: 240 IPS (30 ips/8 analog cameras) PAL: 200 IPS (25 ips/8 analog cameras)
FRAME RATE - IP:	IP camera dependent
COMPRESSION - ANALOG:	H.264 or MJPEG hardware compression
COMPRESSION - IP CAMERAS:	H.264, MPEG-4, MJPEG (camera dependent)
ALARM INPUTS:	4 TTL inputs
ALARM OUTPUTS:	2 TTL outputs and 1 relay output
VIDEO INPUTS - ANALOG:	8 BNC
VIDEO INPUTS - IP:	Up to 24 IP camera inputs (optional)
VIDEO OUTPUTS - ANALOG:	1 BNC
ANALOG PTZ PROTOCOLS:	AD-RS422, Bosch, GE-ASCII, GE-Impac, Panasonic, Pelco D/P
AUDIO INPUTS	4 + IP camera audio
SERIAL CONNECTIONS	RS-485 PTZ port, RS-232 port
NIC	1 Gbit 1000Base T RJ-45
USB2 PORTS	6 (2 front, 4 rear)
HARD DRIVE STORAGE	Enterprise class 250, 500, 750, 1000 & 2000 GB
VGA OUTPUT	1 VGA (DB15)
KEYBOARD & MOUSE	Included
DVD/CD RW	Included (front panel access)
WATCHDOG TIMER	Included
OPERATING SYSTEM	Linux embedded on flash drive
COMPATIBLE CLIENT OPERATING SYSTEMS	Windows 7, Windows Vista, Windows XP, Windows Server 2003/2008, 32-bit or 64-bit Windows OS, Linux (Ubuntu), Mac OS X
WEB BROWSER SUPPORT:	exacqVision Web server included, allows multi-camera view and recorded video playback via any web browser
MOBILE SUPPORT:	View and playback from any mobile device browser, Apple iPhone & iPad aps available, Google Android app available Summer 2010
REGULATORY	CE (Class A), FCC (Class A)
WARRANTY	3 Years, parts & labor
DIMENSIONS without rack kit (LxWxH):	14.5 x 16.5 x 2.5 (1.5U) inches 36.8 x 41.9 x 6.3 cm
WEIGHT:	12 lbs. / 5.5 kg
OPERATING TEMPERATURE	40 - 95° F / 4.5 - 35° C
RELATIVE HUMIDITY	5-95% RH (non-condensing)
INPUT VOLTAGE:	120/240 VAC auto-sensing
POWER CONSUMPTION:	35W maximum

INCLUDED CLIENT SOFTWARE FEATURES

- Control all exacqVision systems through a single interface
- Freely distributed client software for Windows, Linux and Mac
- Multiple users can be connected, each with different permission levels
- Auto-detection of IP cameras
- Control PTZ cameras (analog and IP)
- Digital PTZ on any camera (live or recorded)
- Easy search across multiple systems
- Easy export of multi-camera clips with built-in DVD-R or USB flash
- exacqRecall - single button export video
- Multi-monitor support (create a video wall)
- Powerful, easy-to-use mapping



Model #	Analog Inputs	IPS	Analog Outputs	IP Licenses	HD Capacity
0800-24-0250-ELS	8	240	1 mux / 1 spot	Up to 24	250 GB
0800-24-0500-ELS	8	240	1 mux / 1 spot	Up to 24	500 GB
0800-24-0750-ELS	8	240	1 mux / 1 spot	Up to 24	750 GB
0800-24-1000-ELS	8	240	1 mux / 1 spot	Up to 24	1000 GB
0800-24-2000-ELS	8	240	1 mux / 1 spot	Up to 24	2000 GB
1600-24-0250-ELS	16	240	1 mux / 1 spot	Up to 24	250 GB
1600-24-0500-ELS	16	240	1 mux / 1 spot	Up to 24	500 GB
1600-24-0750-ELS	16	240	1 mux / 1 spot	Up to 24	750 GB
1600-24-1000-ELS	16	240	1 mux / 1 spot	Up to 24	1000 GB
1600-24-2000-ELS	16	240	1 mux / 1 spot	Up to 24	2000 GB
Item #	Description				
EVIP-01-01	Single IP camera license for any exacqVision system				
SSA-ELS08-01	1-year Software Update Subscription for EL-S 8				
SSA-ELS16-01	1-year Software Update Subscription for EL-S 16				
EVES-01	exacqVision Enterprise Server Option				
SSA-EVES-01	Enterprise Server Option Software Update Subscription (1 year)				
5000-64100	Rack-mount Kits for exacqVision EL/EL-S (adapters, handles)				

